



## Access to log data - company-wide

\_beta log|x is a solution for cross-platform and cross-format log data management in your company. Data from different sources, e.g. mainframe, Windows, Linux/ Unix systems and applications (e.g. SAP) can be brought together in one place and made available from there across the enterprise. Beta UX's new data model provides improved job log output support for both IBM Z and distributed systems usage, and is also the ideal extension for Broadcom Automic customers in particular to their existing log management & archive solutions..

## Search, analyze & archive job output and log data!

\_beta log|x enables the company-wide, cross-platform and cross-application management and processing of log data. All system activities can be analyzed and archived centrally. In this way, transparent and audit-proof data storage over long periods of time is possible. The administration of the application is done via the new administrative interface beta admin for both \_beta log|x and \_beta doc|x.

## Improved flexibility and functionality

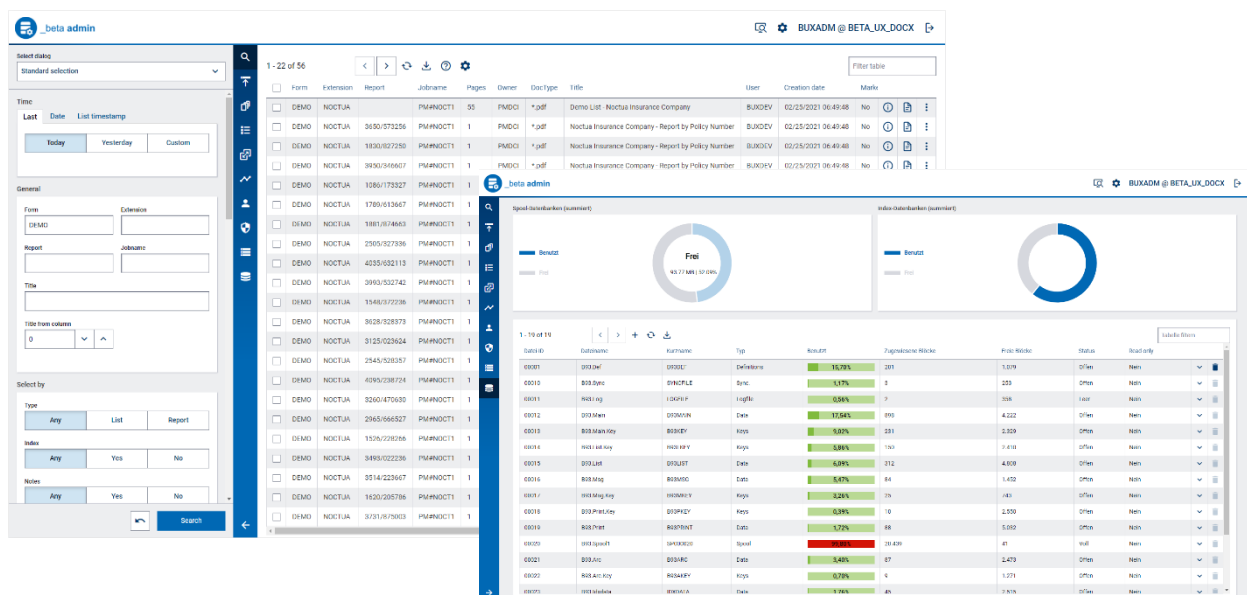
- ✓ **Monitor IT automation:**  
Reading log files of the Unix-based scheduler systems Dollar Universe, Tivoli Workload Scheduler (TWS), J2U, APX und Streamworks.
- ✓ **Central log management:**  
\_beta log|x as a central repository for all system activities.
- ✓ **Full-text search for simple forensics:**  
Easy to find all system messages and analyze logs based on a central repository. High performant and intelligent search in large volumes.
- ✓ **Control of compliance requirements:**  
Support in the control of compliance requirements such as PCI-DSS, HIPAA, SOX, BSI, Basel II and internal guidelines.

### Beta UX V5 | What's new?

\_beta log|x is the successor product for Beta UX LogMaster.

- More flexibility and improved functionality for customers
- Greater ease of use and easier management
- Extensively supplemented job output management for z/OS and Automic
- Advanced security and compliance capabilities

*"Company-wide log management - the largest European companies use Beta Systems solutions for their IT production."*



*Beta Systems helps companies switch platforms from z/OS to Unix!*

## Versatile Enterprise Log Management

\_beta log|x turns the log data generated by operating systems, databases and schedulers or other applications into a mine of knowledge.

The information, which is thus made available quickly and clearly centrally, points you to critical situations and enables the optimization of your processes.

Turn data into information.

## Log Management for Job Schedulers

Job Schedulers are the heart of IT production. Many transactions are executed every second in the systems. Many of our customers therefore use and appreciate \_beta log|x as a central log repository for their IT automation.

## Log data under control

Adapted to your needs, \_beta log|x gets exactly the information that matters. No matter how deep they are hidden in logs or subdirectories – with easy handling you can automate the with-crash process of your log management. This saves you valuable time and resources and increases the quality of your workmanship.

## Audit-proof archiving

The processed data is made available in an audit-proof and efficient form for long-term archiving. A wide variety of log files come together in a central repository and can be accessed and used across platforms and applications throughout the company.

\_beta log|x is scalable as required and ensures the storage and access of data, in accordance with the law and in accordance with internal GRC standards (Governance, Risk & Compliance).

**Beta Systems DCI Software AG**

Alt-Moabit 90 d  
10559 Berlin | Germany

Phone +49 (0) 30 726 118-0 Fax: +49 (0) 30  
726 118-800info@betasystems.com

**\_betasystems**

Beta Systems DCI Software AG, 2021. All rights reserved.